

UseCase.0009 (1.0)

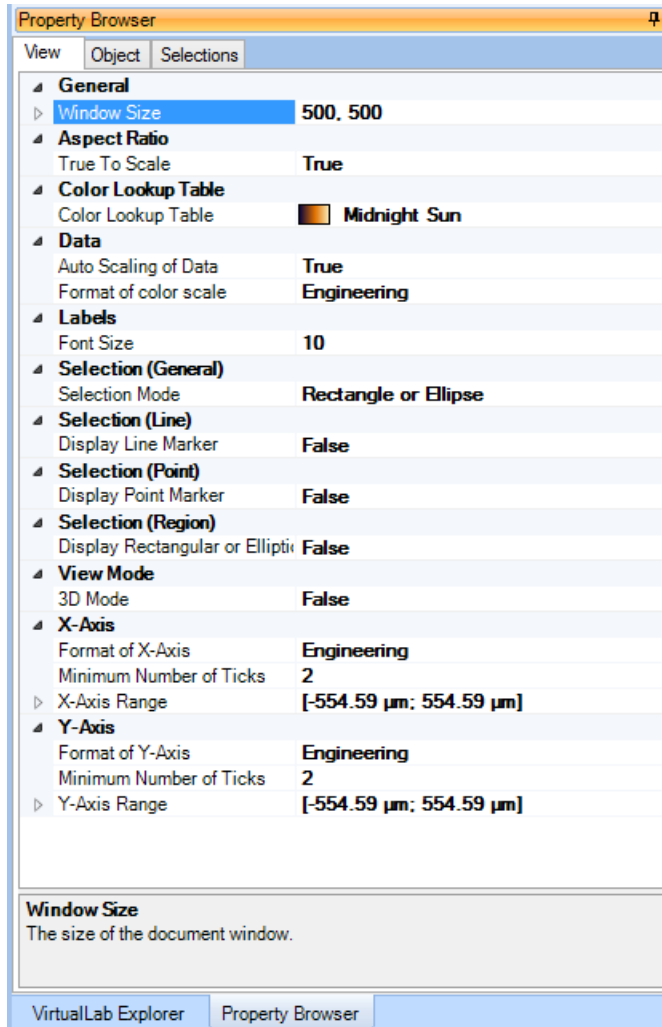
Usage of the Property Browser

Keywords: information, document specific, view, properties

Description

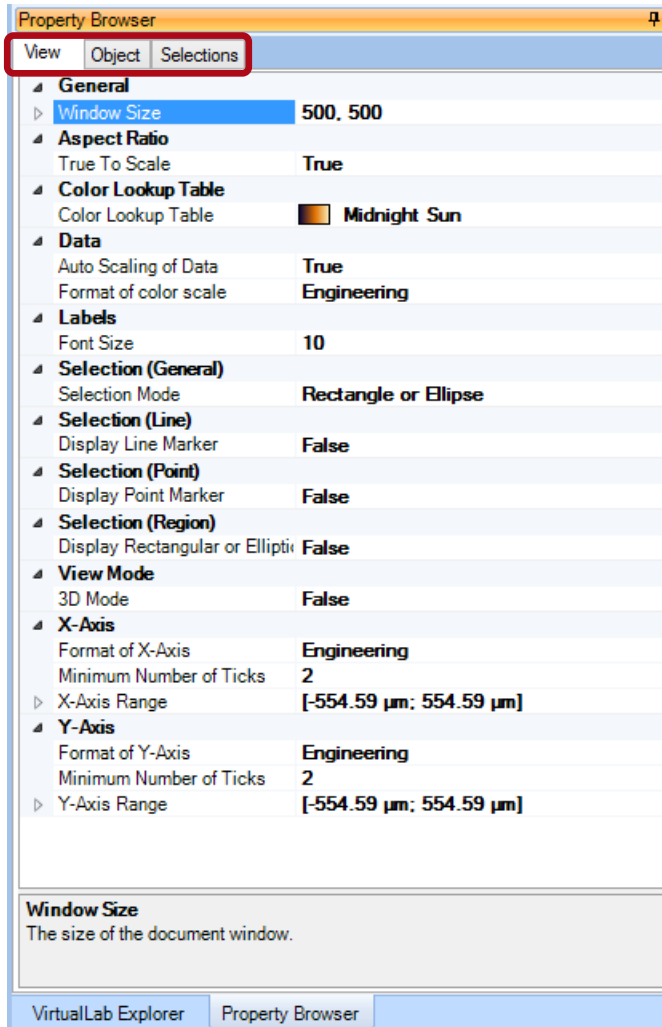
- The property browser can be used to access additional information for the active document.
- This use case explains the general structure of the property browser.
- By default the property browser window is located on the right side of the VirtualLab main window.
- Its window is moveable and can be adapted for your needs.
- The property browser will be discussed on the example for 2D data arrays.

Property Browser of the Data Array



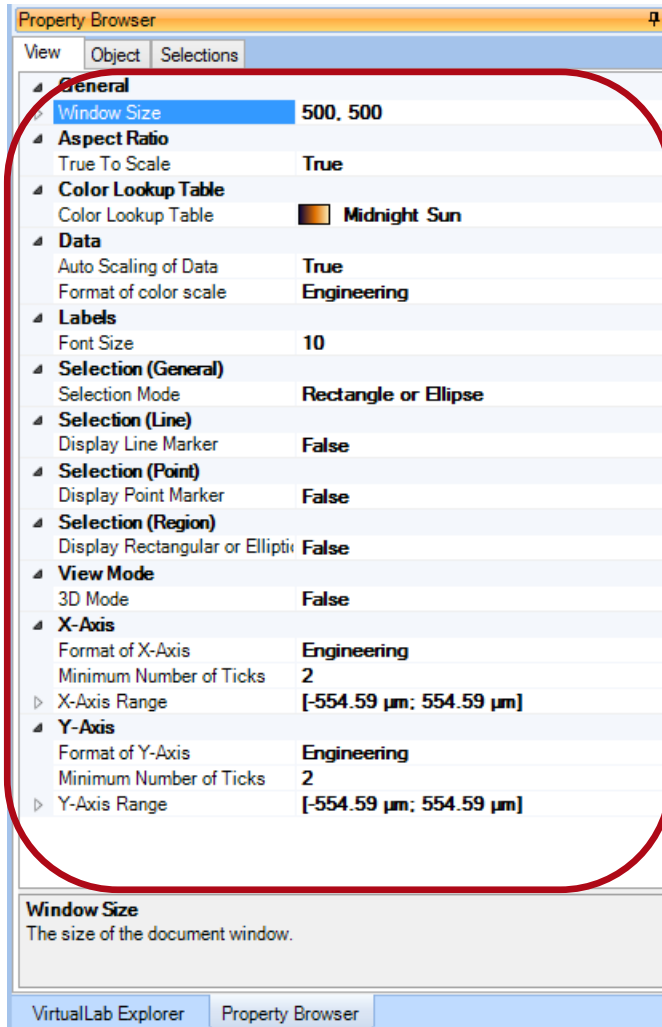
- The property browser can be used to access document specific information of the active VirtualLab document.
- Each document type has different entries within the property browser.
- The general structure of the setup of the property browser is always the same.

Property Browser – General Setup



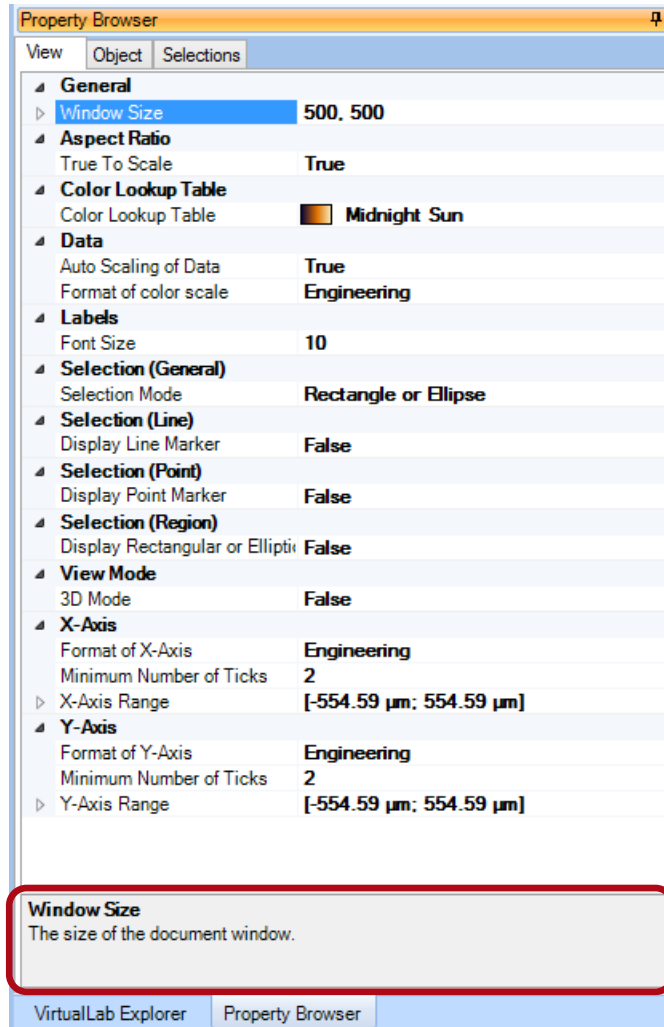
- On the top of the property browser window the main categories can be accessed.
- The following categories are typical available for a document
 - View
 - Object
 - Selections

Property Browser – General Setup



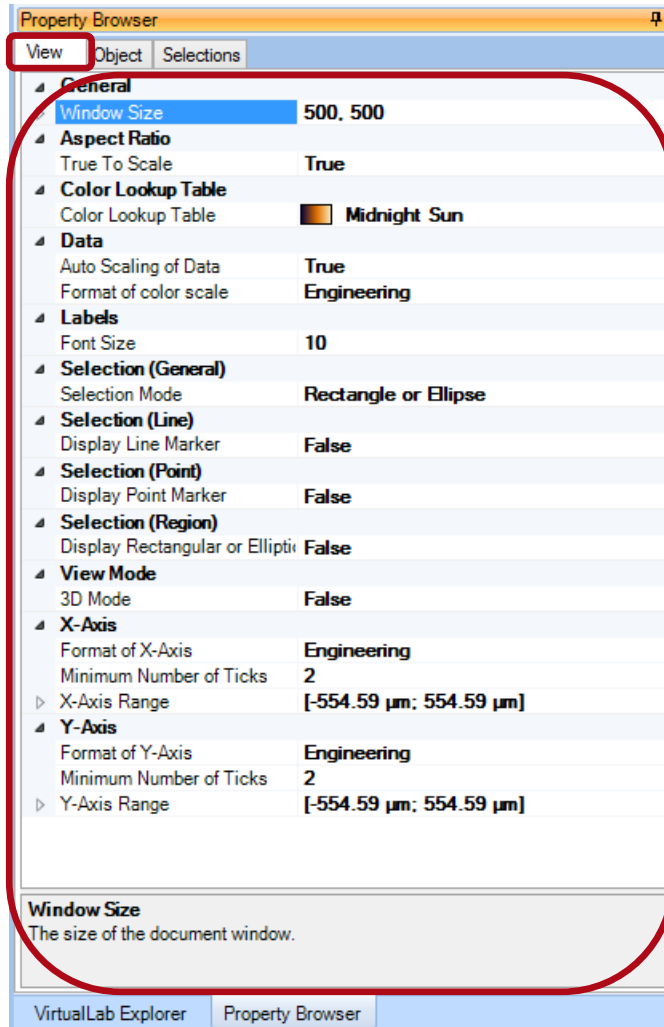
- In the middle of the document a list of properties is given.
- Some properties are read-only (marked by gray coloring) others can be edited.
- The properties are organized in sub-categories for a user-friendly usage.

Property Browser – General Setup



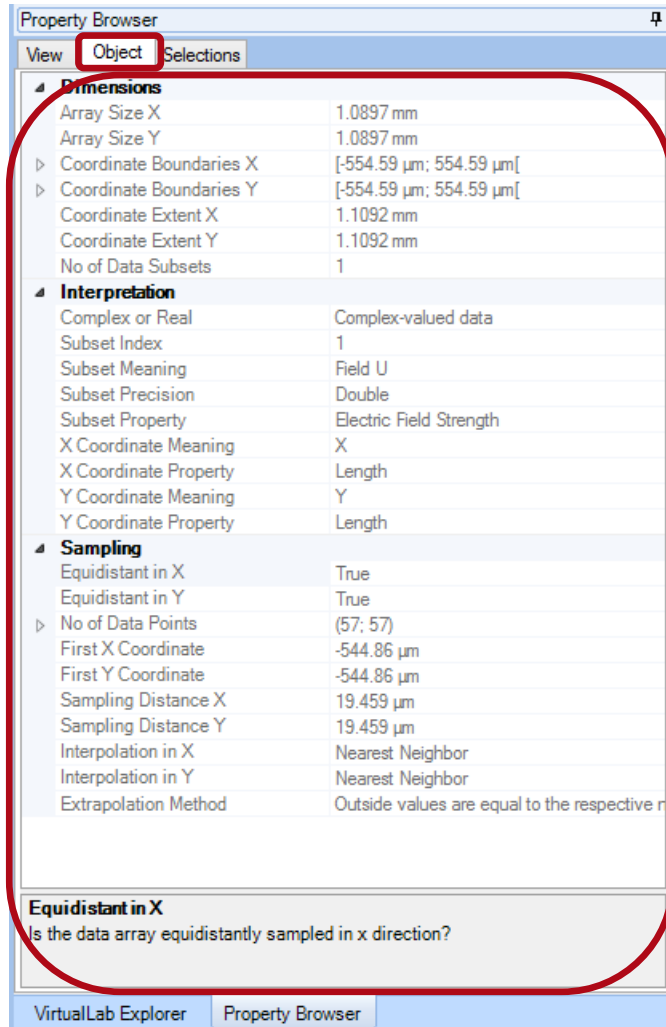
- At the bottom of the property browser an additional description is displayed.
- Depending on the currently selected entry within the property browser, VirtualLab shows here some additional description of the parameter.

Property Browser – View Tab



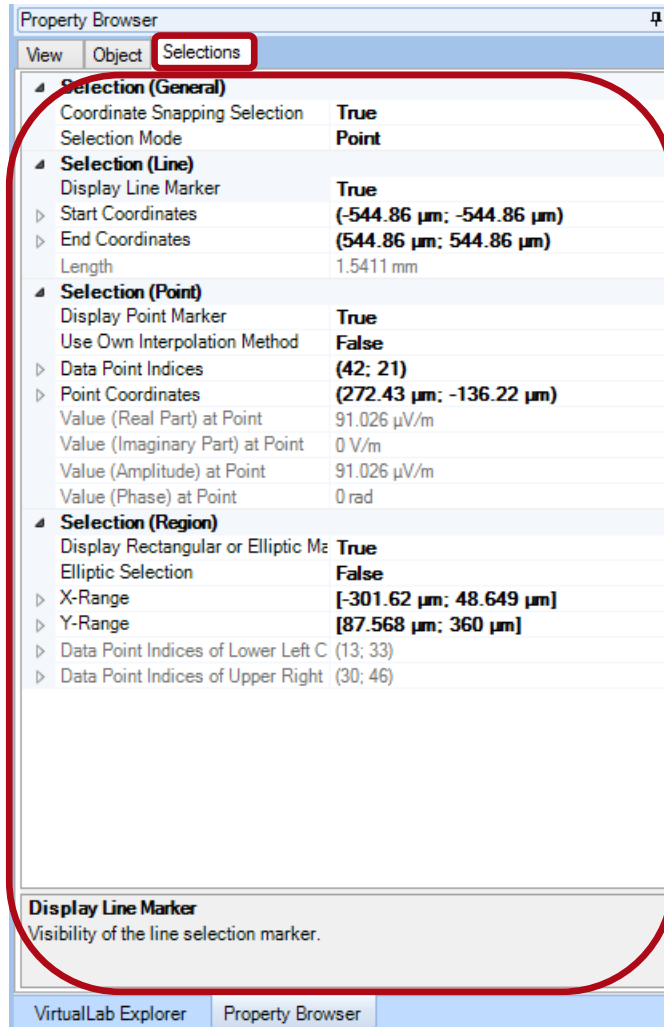
- The view tab of the property browser can be used to set up view parameters.
- Typical view parameters are
 - Window size
 - Color options
 - Font sizes
 - Show selection marker
 - Formatting of x and y axis (at least for 2D data arrays)

Property Browser – Object Tab



- The object tab gives an overview of the important parameters of the active document.
- For data arrays you can get here information about
 - Dimensions (array size, number of subsets, ...)
 - Interpretation (subset & coordinate meaning, ...)
 - Sampling (equidistant, sampling distance, number of points)

Property Browser – Selections Tab



- On the selections tab the user can specify the visibility of the selections tools as well as the active selection to use.
- For each selection tool information on the selection are given.
- The user can also enter coordinates to set up the parameters of the selection (e.g. the position of the point marker).

Summary

- The property browser concept allows the user to access additional information dependent on the currently selected (active) document.
- Typically it is structured in a standardized way to access
 - View settings
 - Object information
 - Selection specification
- The property browser can be used to view and also to modify settings or properties of the active document. (Typically there are also ribbon items that allow these configurations.)