

Feature.0007

Customizable Help for Programmable Elements

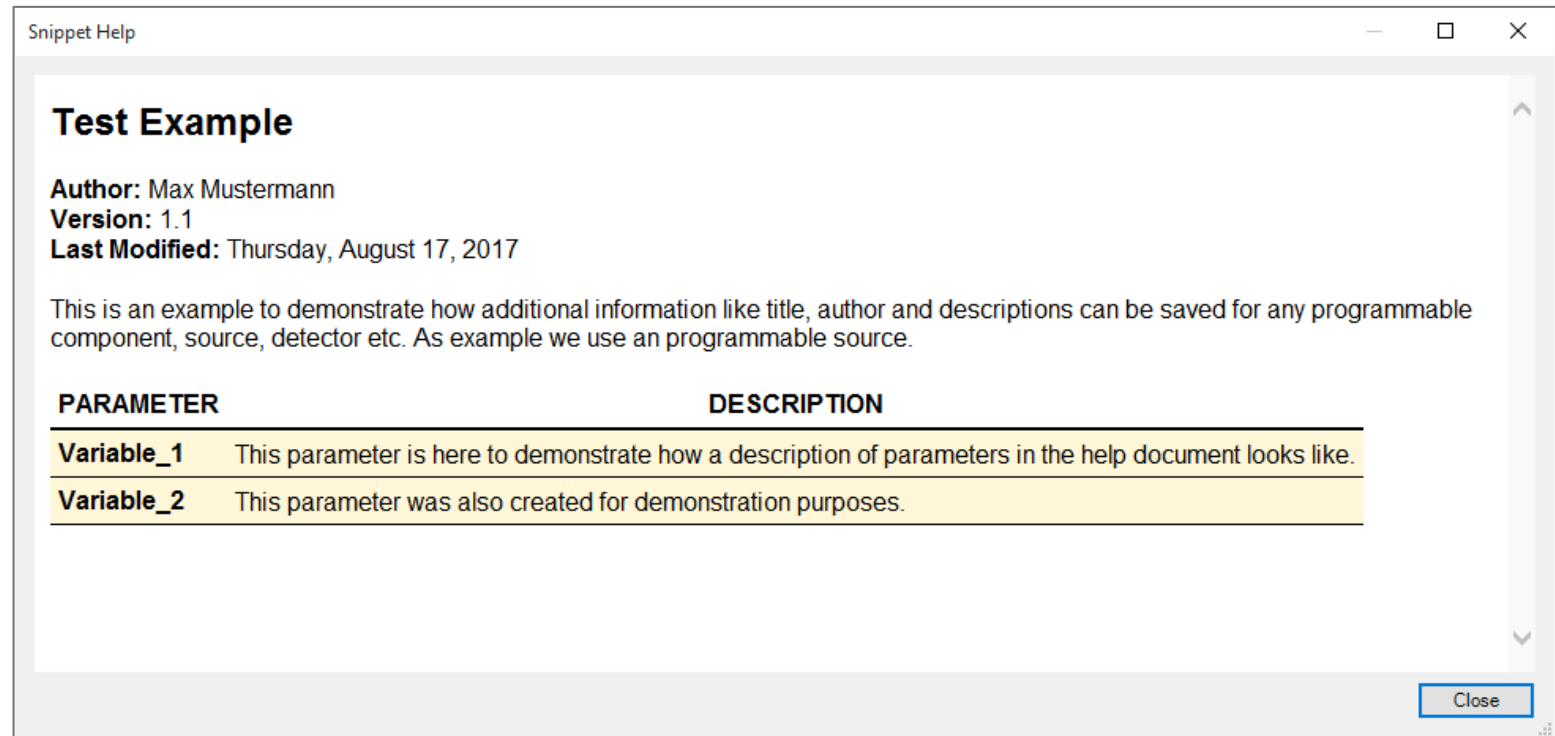
VirtualLab provides multiple tools to program your custom sources, components, detectors etc. The Help document allows to save additional information about these user-defined elements and make it easy to track, share and distribute.

About this Use Case

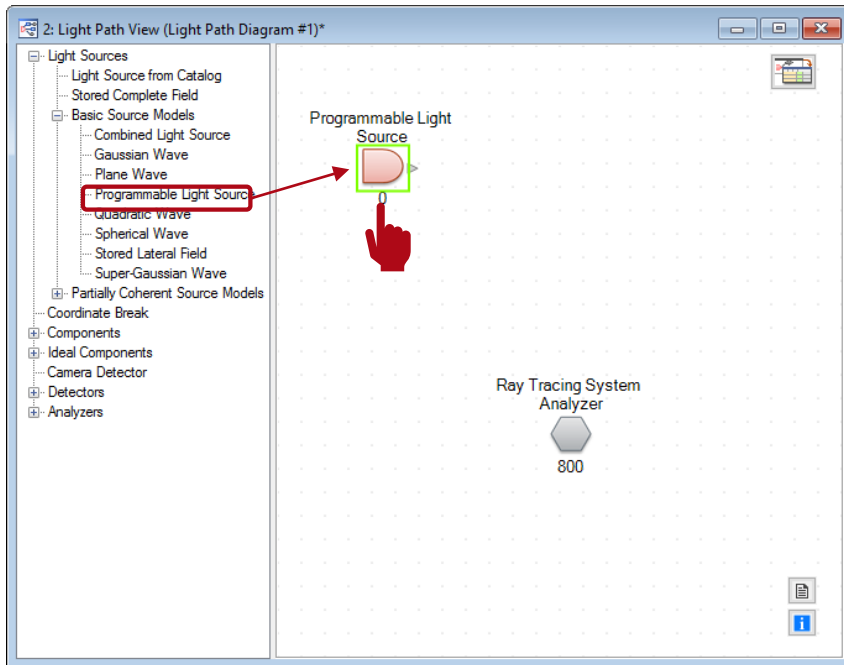
- The following toolbox is required
 - Starter toolbox
- This tutorial was created with VirtualLab Fusion (Build 7.0.0.35).
- Get your free Trial Version [here](#)!

This Use Case Shows...

- how to customize the Programming Help Document for programmable modules.

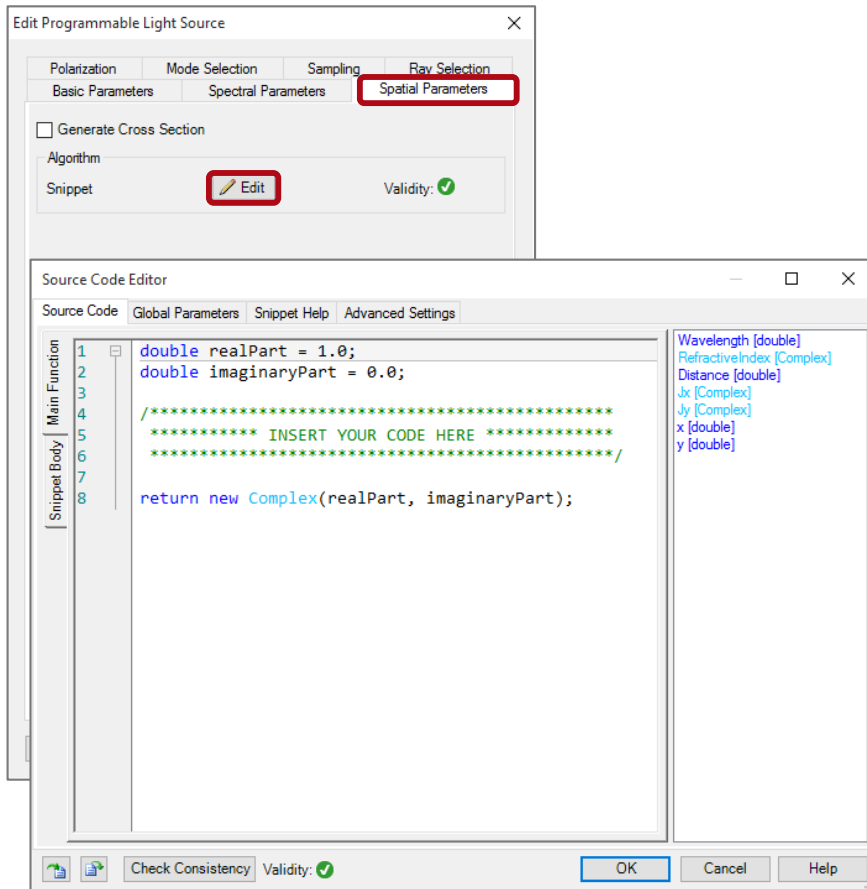


Programmable Elements



- We use a *Programmable Light Source* for demonstration in this example, and it works in a similar way for all other programmable elements in VirtualLab.
- Double click on the light source and its edit window will pop up.

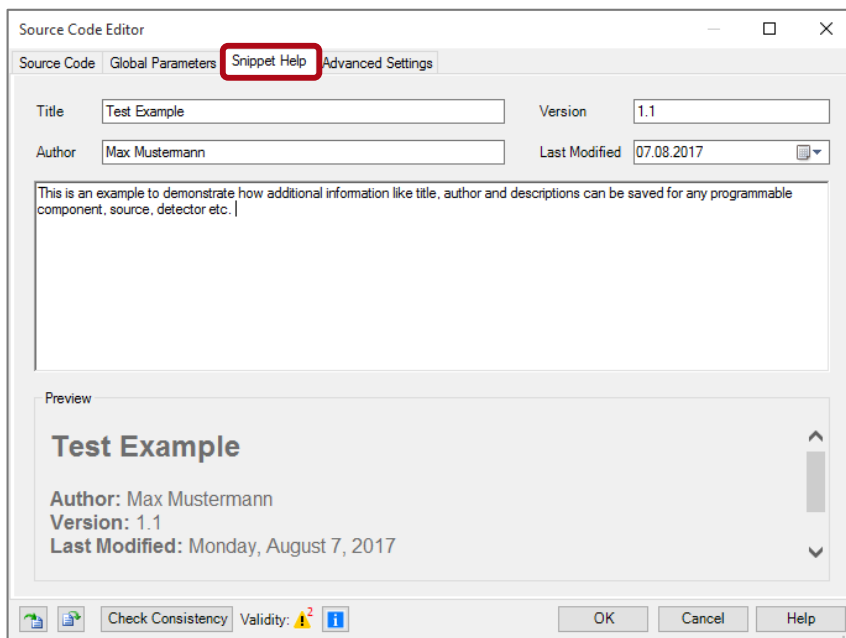
Algorithm Snippet




- Go to *Spatial Parameters* tab in the edit window.
- Then, click on the *Edit* button in the *Snippet* section, and a *Source Code Editor* will pop up.

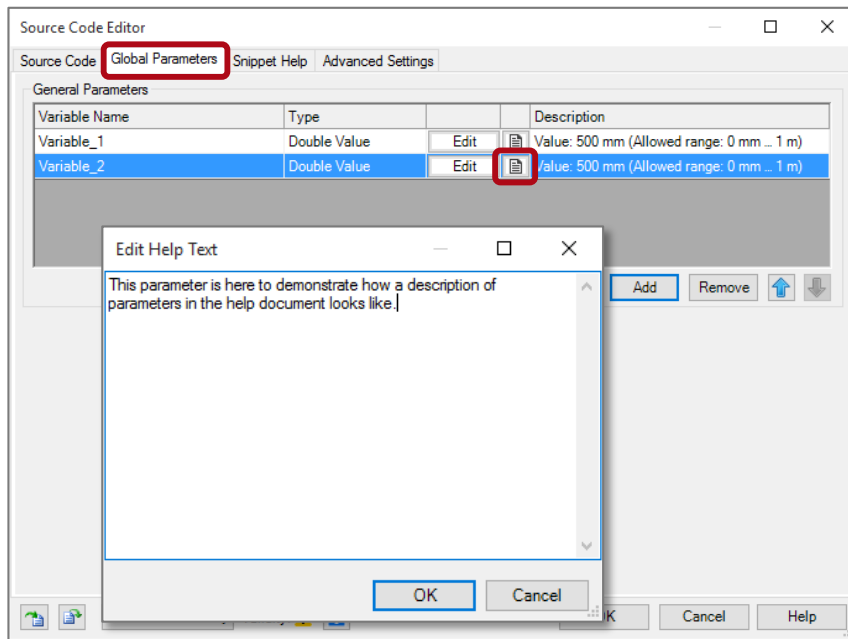
Snippet Help

- Under the tab *Snippet Help* in the source code editor, you may add information like title, author, version number, date of the last modification and a general description of the snippet.

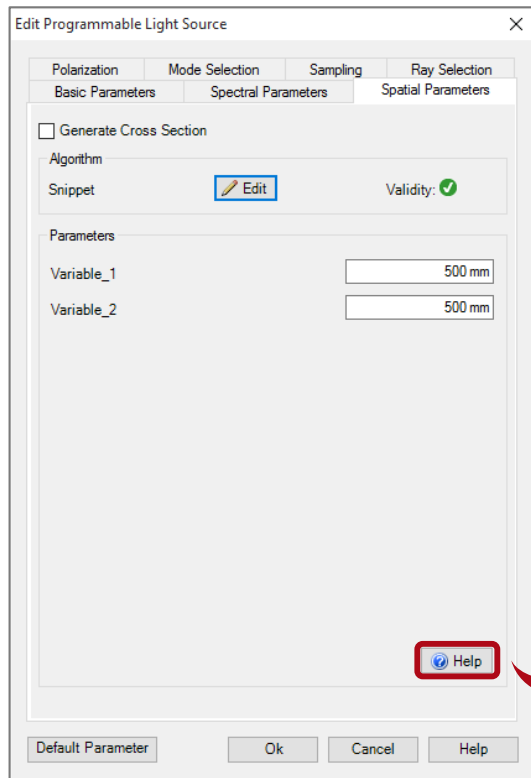


Snippet Help

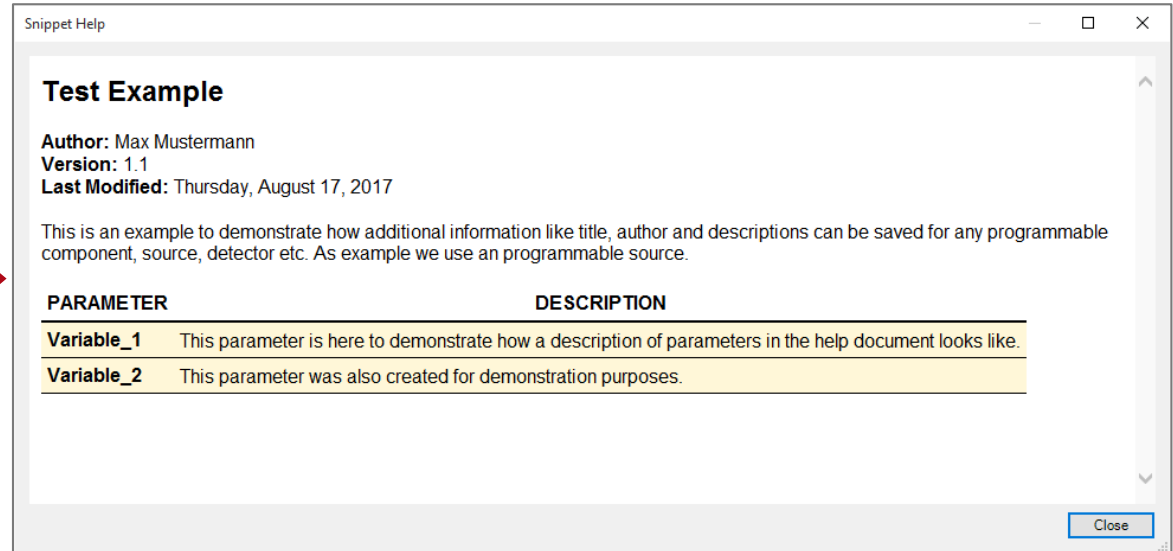
- Next, go to the tab *Global Parameters*, and there you may give descriptions for each parameter, by clicking on the icon .



Snippet Help



After saving the changes, the help information and comments on parameters are available for display as in an overview by clicking the *Help* button.



Document & Technical Info

| | |
|---------------------|---|
| code | Feature.0007 |
| version of document | 1.0 |
| title | Customizable Help for Programmable Elements |
| category | Tools & Handling |
| author | Dominik Kühn (LightTrans) |
| used VL version | 7.0.0.35 |
| last modified on | August 24, 2017 |